

# EAST SIDE SQUARE

SPRINGFIELD, OH

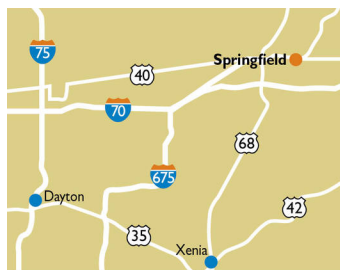
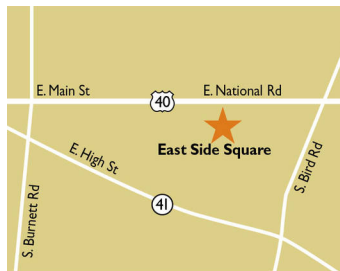


## SIZE

8,400 square feet

## DEMOGRAPHICS

	1 mile	3 mile	5 mile
<b>Population</b>	3,211	28,390	72,854
<b>Households</b>	1,327	11,453	29,359
<b>Median HH Income (\$)</b>	53,604	46,139	46,930



## LOCATION

3451-3471 E. National Road | Springfield, OH 45505

## PROPERTY HIGHLIGHTS

- Anchored by Walmart Supercenter
- National and regional tenants include Hot Head Burrito, Sonic Drive-In, Fifth Third Bank and Bob Evans
- Located along with Interstate 70 corridor and home to Wittenberg University
- Population within a three-mile radius exceeds 28,300 people

## LEASING CONTACT

Scott Faloni  
Mobile (410) 693-3248  
sfaloni@phillipsedison.com

## MORE INFO

[www.phillipsedison.com](http://www.phillipsedison.com)








**PHILLIPS EDISON & COMPANY®**

# EAST SIDE SQUARE

3451-3471 E. National Road | Springfield, OH 45505

SPACE	TENANT	SQ. FT.
OUT2	Merchants Bank	
SHAD2	Walmart	
3451	Penn Station East Coast Subs	1,500 SF
3451A	Penn Station East Coast Subs	600 SF
3459	Hot Head Burritos	1,800 SF
3463	The Cellular Connection	1,500 SF
3467	Yamato Steak House Restaurant	1,766 SF
3471	Tip Top Smoke Emporium	1,234 SF
<b>TOTAL SQ. FT.</b>		<b>8,400</b>

SITE LEGEND	
	Available
	Leased (not occupied)
	Site Boundary
	Occupied
	Owned by Others



DISCLAIMER - This site plan is for general information purposes only and is not intended to constitute representations and warranties by Landlord as to the ownership of the real property depicted herein or the identity or nature of any occupants thereof.

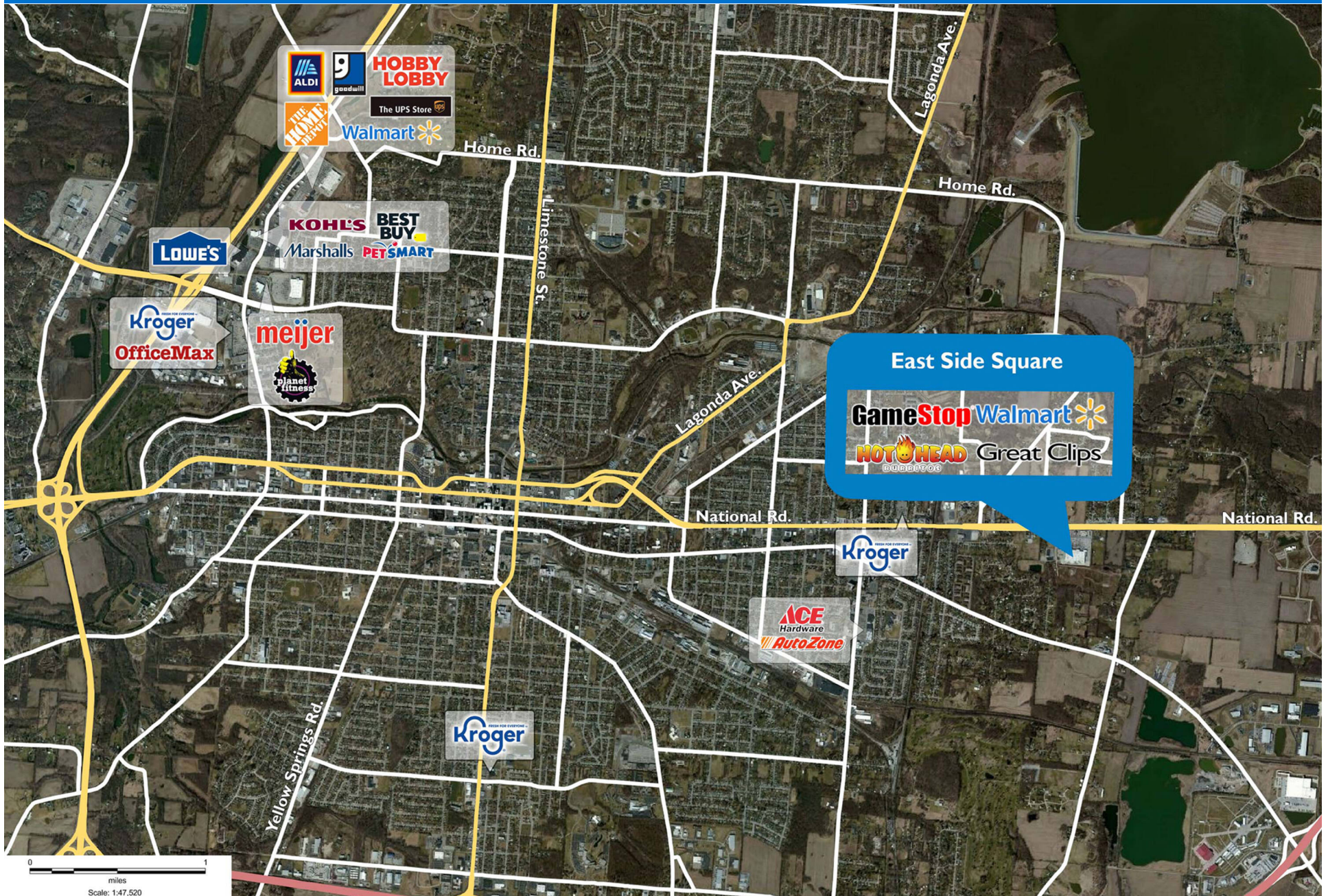
# EAST SIDE SQUARE

3451-3471 E. National Road | Springfield, OH 45505



# EAST SIDE SQUARE

3451-3471 E. National Road | Springfield, OH 45505



# Demographic Summary Report

1990 - 2000 Census, 2022 Estimates & 2027 Projections

Calculated using TAS Retrieval Retrieval

Mar 20, 2023



East Side Square Springfield, OH		1.00 Mile Radius	3.00 Mile Radius	5.00 Mile Radius
Population	Q2 2022 Estimated Population	3,211	28,390	72,854
	2027 Projected Population	3,166	27,956	71,771
	2010 Census Population	3,195	29,040	75,228
	2000 Census Population	3,263	30,859	80,964
	1990 Census Population	3,297	32,252	85,287
	Historical Annual Growth 1990 to 2000	-0.10%	-0.44%	-0.52%
	Historical Annual Growth 2000 to 2010	-0.21%	-0.61%	-0.73%
	Estimated Annual Growth 2010 to 2022	0.04%	-0.18%	-0.25%
	Projected Annual Growth 2022 to 2027	-0.29%	-0.31%	-0.30%
	Median Age	41.4	39.3	39.0
Households	Q2 2022 Estimated Households	1,327	11,453	29,359
	2027 Projected Households	1,307	11,270	28,926
	2010 Census Households	1,319	11,732	30,278
	2000 Census Households	1,356	12,530	32,164
	1990 Census Households	1,375	12,951	32,675
	Historical Annual Growth 1990 to 2000	-0.14%	-0.33%	-0.16%
	Historical Annual Growth 2000 to 2010	-0.27%	-0.66%	-0.60%
	Estimated Annual Growth 2010 to 2022	0.04%	-0.19%	-0.24%
	Projected Annual Growth 2022 to 2027	-0.29%	-0.32%	-0.30%
	Population per Household	2.41	2.45	2.40
Population by Race	White	91.8%	84.7%	77.4%
	Black or African American	2.7%	8.0%	14.1%
	Asian & Pacific Islander	0.2%	0.5%	0.7%
	Other Races	4.4%	4.3%	4.6%
	Hispanic Population	0.9%	2.6%	3.3%
Income	Average Household Income	\$67,505	\$57,417	\$60,769
	Median Household Income	\$53,604	\$46,139	\$46,930
	Per Capita Income	\$27,942	\$23,376	\$25,035
Education (Age 25+)	Elementary	3.1%	3.6%	3.1%
	Some High School	10.2%	12.5%	9.8%
	High School Graduate	30.8%	41.8%	38.7%
	Some College	24.8%	22.3%	22.9%
	Associates Degree Only	18.3%	10.4%	9.6%
	Bachelors Degree Only	10.3%	6.8%	9.7%
	Graduate Degree	2.4%	2.6%	6.2%
Business	Number of Businesses	59	598	1,651
	Total Number of Employees	1,182	10,456	29,228
	Employees per Business	19.98	17.48	17.71
	Residential Population per Business	54.30	47.47	44.14

This report was produced using data from private and government sources deemed to be reliable and is herein provided without representation or warranty.