



SIZE

169,478 square feet

DEMOGRAPHICS

| | 1 mile | 3 mile | 5 mile |
|------------------------------|---------|---------|---------|
| Population | 6,638 | 60,828 | 140,349 |
| Households | 2,166 | 22,704 | 51,355 |
| Median HH Income (\$) | 138,654 | 136,447 | 129,843 |

MAJOR TENANT(S)

Stop & Shop
T.J.Maxx
HomeGoods
Smashburger

LEASING CONTACT

Scott Faloni
Mobile (410) 693-3248
sfaloni@phillipsedison.com

MORE INFO

www.phillipsedison.com



LOCATION

500 Route 23 North | Pompton Plains, NJ 07444

PROPERTY HIGHLIGHTS

- 169,478-square-foot center anchored by Super Stop & Shop
- National tenants include T.J.Maxx, HomeGoods, Jersey Mike's, Popeyes, Sally Beauty Supply and Smashburger
- More than 60,800 residents in the three-mile radius with an average household income over \$168,700
- Located near the intersection of Route 23 N (54,900 VPD) and Jackson Avenue (7,100 VPD)
- More than 2.4 million visits to the center in the last 12 months according to Placer.ai data



PLAZA 23

500 Route 23 North | Pompton Plains, NJ 07444

| SPACE | TENANT | SQ. FT. |
|----------------------|--------------------------------|----------------|
| A1 | Popeyes | 2,510 SF |
| B1 | Just Salad | 2,297 SF |
| B2 | Optimum | 2,412 SF |
| B4 | Tropical Smoothie | 1,224 SF |
| 1 | Moe's Southwest Grill | 2,400 SF |
| 1.2 | Smashburger | 1,980 SF |
| 1.5 | Foot Reflexology and Body Work | 1,620 SF |
| 1A | Pok?Stop | 1,807 SF |
| 1B | Playa Bowls | 1,800 SF |
| 1C | Jersey Mike's Subs | 1,600 SF |
| 2 | V & J Pizza | 2,400 SF |
| 3 | Wayne Bedding | 2,400 SF |
| 3A | Sally Beauty Supply | 1,600 SF |
| 4 | Escape Salon | 1,600 SF |
| 5 | Paragon Jewelers | 1,600 SF |
| 6 | Pompton Family Dental | 1,200 SF |
| 7 | Visionworks | 2,400 SF |
| 8 | New Paradise Nail & Spa | 1,200 SF |
| 9 | HomeGoods | 30,811 SF |
| 12 | T.J.Maxx | 31,988 SF |
| 13 | Stop & Shop | 65,031 SF |
| 15 | Verizon | 3,888 SF |
| 16 | Buy Rite Liquors | 3,710 SF |
| TOTAL SQ. FT. | | 169,478 |

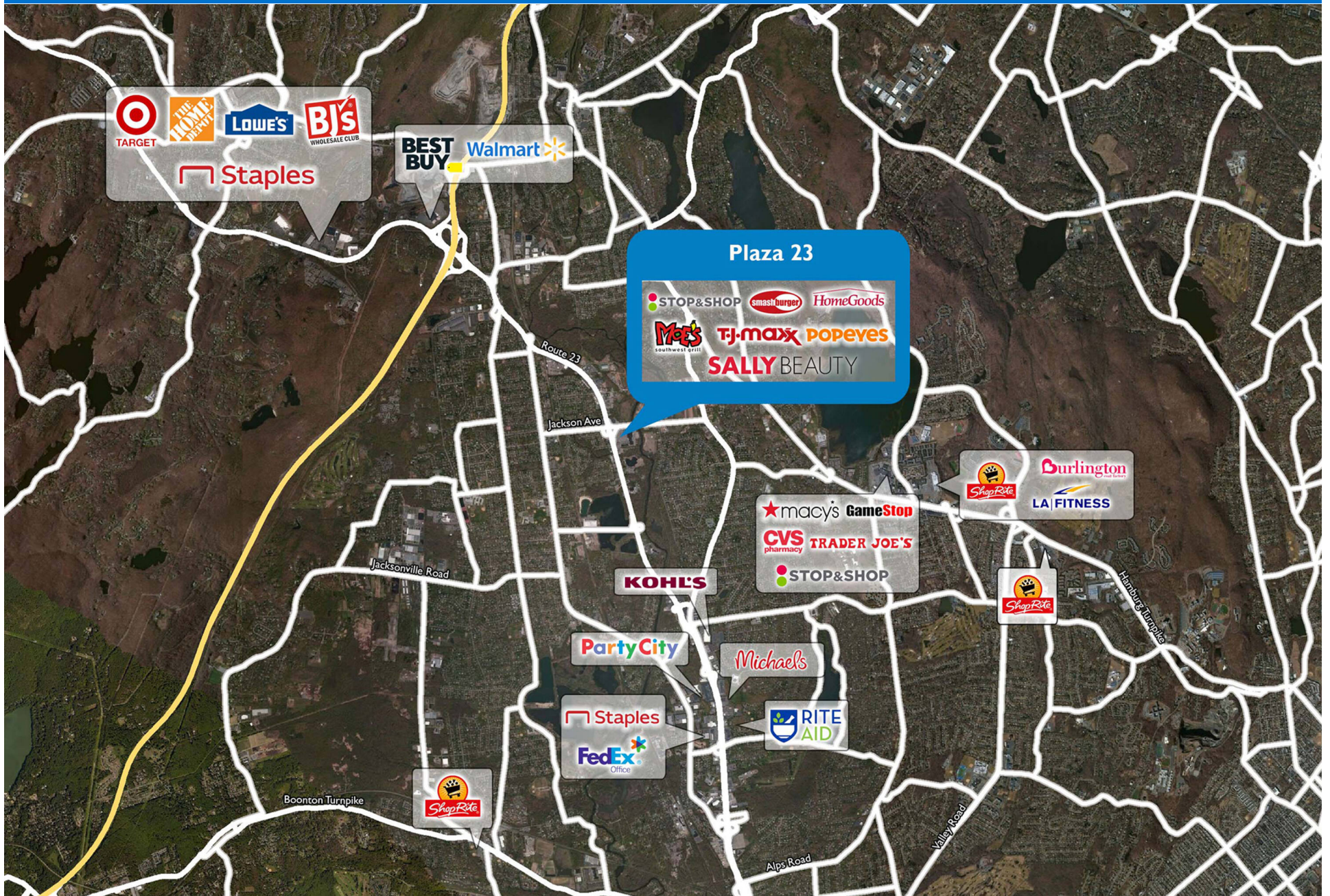
| SITE LEGEND | |
|---|---|
| Available | Occupied |
| Leased (not occupied) | Owned by Others |
| Site Boundary | |



DISCLAIMER - This site plan is for general information purposes only and is not intended to constitute representations and warranties by Landlord as to the ownership of the real property depicted herein or the identity or nature of any occupants thereof.



PROPOSED OUTPARCEL
AVAILABLE



Demographic Summary Report

1990 - 2000 Census, 2023 Estimates & 2028 Projections

Calculated using TAS Retrieval Retrieval

Apr 17, 2024



Latitude: 40.967892

Longitude: -74.28271

| Plaza 23 Pompton Plains_NJ | | 1.00 Mile Radius | 3.00 Mile Radius | 5.00 Mile Radius |
|-------------------------------|---------------------------------------|------------------|------------------|------------------|
| Population | Q4 2023 Estimated Population | 6,638 | 60,828 | 140,349 |
| | 2028 Projected Population | 6,589 | 60,568 | 140,421 |
| | 2010 Census Population | 6,438 | 59,846 | 138,586 |
| | 2000 Census Population | 6,460 | 56,721 | 134,484 |
| | 1990 Census Population | 6,293 | 52,383 | 124,321 |
| | Historical Annual Growth 1990 to 2000 | 0.26% | 0.80% | 0.79% |
| | Historical Annual Growth 2000 to 2010 | -0.03% | 0.54% | 0.30% |
| | Estimated Annual Growth 2010 to 2023 | 0.22% | 0.12% | 0.09% |
| | Projected Annual Growth 2023 to 2028 | -0.15% | -0.09% | 0.01% |
| | Median Age | 44.6 | 46.0 | 45.4 |
| Households | Q4 2023 Estimated Households | 2,166 | 22,704 | 51,355 |
| | 2028 Projected Households | 2,150 | 22,601 | 51,341 |
| | 2010 Census Households | 2,172 | 22,433 | 50,529 |
| | 2000 Census Households | 2,238 | 20,043 | 47,051 |
| | 1990 Census Households | 2,111 | 17,796 | 41,924 |
| | Historical Annual Growth 1990 to 2000 | 0.58% | 1.20% | 1.16% |
| | Historical Annual Growth 2000 to 2010 | -0.30% | 1.13% | 0.72% |
| | Estimated Annual Growth 2010 to 2023 | -0.02% | 0.09% | 0.12% |
| | Projected Annual Growth 2023 to 2028 | -0.14% | -0.09% | -0.01% |
| | Population per Household | 2.94 | 2.64 | 2.65 |
| Population by Race | White | 79.0% | 78.2% | 75.7% |
| | Black or African American | 1.0% | 1.5% | 2.2% |
| | Asian & Pacific Islander | 5.6% | 6.2% | 6.9% |
| | Other Races | 2.5% | 3.0% | 2.8% |
| | Hispanic Population | 11.9% | 11.2% | 12.4% |
| Income | Average Household Income | \$166,934 | \$168,752 | \$164,864 |
| | Median Household Income | \$138,654 | \$136,447 | \$129,843 |
| | Per Capita Income | \$56,149 | \$63,731 | \$61,424 |
| Education (Age 25+) | Elementary | 1.9% | 2.1% | 2.4% |
| | Some High School | 4.2% | 1.9% | 2.4% |
| | High School Graduate | 25.4% | 23.4% | 23.6% |
| | Some College | 17.1% | 14.3% | 14.1% |
| | Associates Degree Only | 7.6% | 6.6% | 6.1% |
| | Bachelors Degree Only | 29.3% | 31.7% | 31.3% |
| | Graduate Degree | 14.5% | 20.0% | 20.2% |
| Business | Number of Businesses | 309 | 2,034 | 4,637 |
| | Total Number of Employees | 3,958 | 22,272 | 51,259 |
| | Employees per Business | 12.80 | 10.95 | 11.05 |
| | Residential Population per Business | 21.46 | 29.90 | 30.27 |

This report was produced using data from private and government sources deemed to be reliable and is herein provided without representation or warranty.