



SIZE

126,384 square feet

DEMOGRAPHICS

	1 mile	3 mile	5 mile
Population	4,926	26,445	95,635
Households	2,052	9,487	33,857
Median HH Income (\$)	125,707	151,254	151,304

MAJOR TENANT(S)

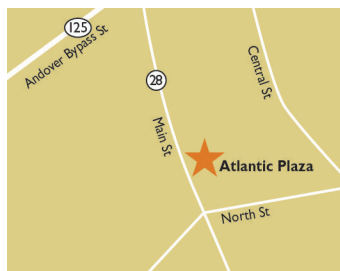
Stop & Shop
 OrangeTheory Fitness
 Massage Envy
 Supercuts
 Starbucks

LEASING CONTACT

Marissa Visconsi
 Mobile (303) 547-4386
 mvisconsi@phillipsedison.com

MORE INFO

www.phillipsedison.com



LOCATION

271 North Main Street | North Reading, MA 01864

PROPERTY HIGHLIGHTS






- Anchored by Stop & Shop
- Other national tenants include Orangetheory Fitness, Starbucks, Supercuts and Pet Supplies Plus
- Located at the intersection of North Street and North Main Street with more than 20,600 vehicles per day
- Population exceeds 26,400 in a three-mile radius with an average household income greater than \$202,600

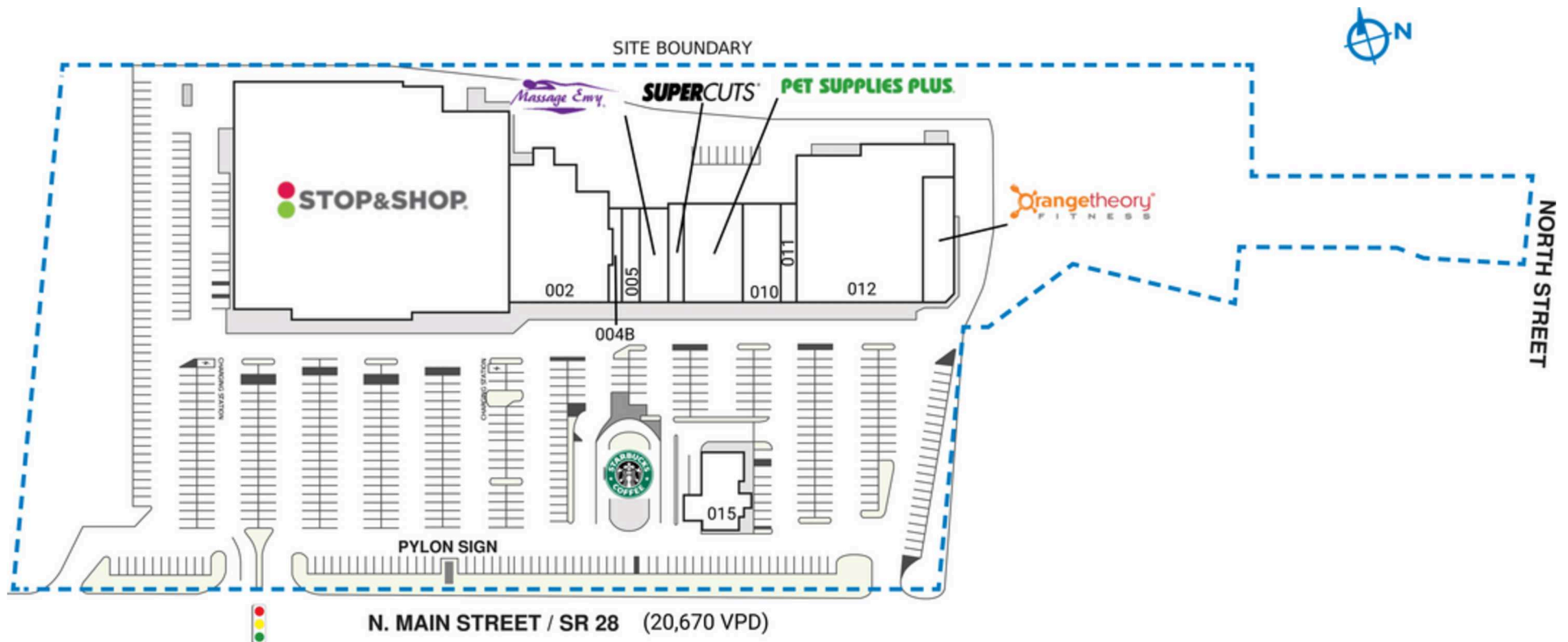


ATLANTIC PLAZA

271 North Main Street | North Reading, MA 01864

SPACE	TENANT	SQ. FT.						
001	Stop & Shop	64,492 SF	006	Massage Envy	2,981 SF	012	Cowabungas	22,147 SF
002	One Stop Liquors	13,595 SF	007	Supercuts	1,650 SF	12A	OrangeTheory Fitness	3,000 SF
004B	Threading & Body Wax Center	1,000 SF	008	Pet Supplies Plus	5,594 SF	014	Starbucks	1,624 SF
005	Stretch Lab	1,515 SF	010	Ginger Gourmet	4,020 SF	015	Winter Hill Bank	3,200 SF
			011	Luxor Nail Salon	1,566 SF	TOTAL SQ. FT.		126,384

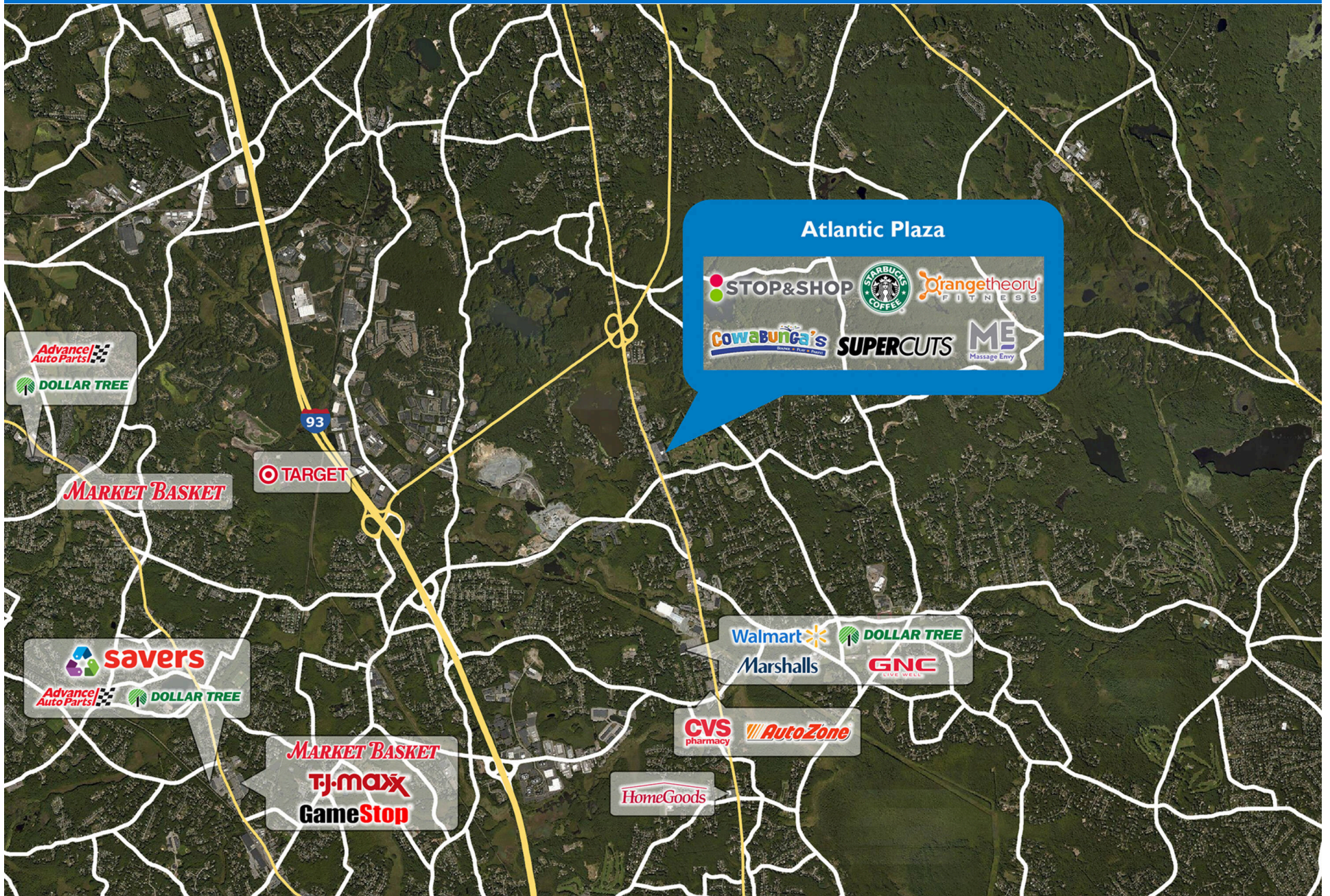
SITE LEGEND	
	Available
	Occupied
	Leased (not occupied)
	Owned by Others
	Site Boundary



DISCLAIMER - This site plan is for general information purposes only and is not intended to constitute representations and warranties by Landlord as to the ownership of the real property depicted herein or the identity or nature of any occupants thereof.

ATLANTIC PLAZA

271 North Main Street | North Reading, MA 01864



Demographic Summary Report

1990 - 2000 Census, 2023 Estimates & 2028 Projections

Calculated using TAS Retrieval Retrieval

Apr 17, 2024



Latitude: 42.591963

Longitude: -71.116281

Atlantic Plaza North Reading, MA		1.00 Mile Radius	3.00 Mile Radius	5.00 Mile Radius
Population	Q4 2023 Estimated Population	4,926	26,445	95,635
	2028 Projected Population	4,981	26,582	95,930
	2010 Census Population	4,717	25,239	91,084
	2000 Census Population	4,243	24,089	86,606
	1990 Census Population	3,916	21,017	79,074
	Historical Annual Growth 1990 to 2000	0.80%	1.37%	0.91%
	Historical Annual Growth 2000 to 2010	1.07%	0.47%	0.51%
	Estimated Annual Growth 2010 to 2023	0.32%	0.34%	0.36%
	Projected Annual Growth 2023 to 2028	0.22%	0.10%	0.06%
	Median Age	44.6	44.6	44.3
Households	Q4 2023 Estimated Households	2,052	9,487	33,857
	2028 Projected Households	2,076	9,544	33,975
	2010 Census Households	1,923	9,012	32,186
	2000 Census Households	1,571	8,337	29,999
	1990 Census Households	1,389	6,981	26,573
	Historical Annual Growth 1990 to 2000	1.24%	1.79%	1.22%
	Historical Annual Growth 2000 to 2010	2.05%	0.78%	0.71%
	Estimated Annual Growth 2010 to 2023	0.47%	0.37%	0.37%
	Projected Annual Growth 2023 to 2028	0.24%	0.12%	0.07%
	Population per Household	2.37	2.75	2.76
Population by Race	White	85.1%	84.2%	84.5%
	Black or African American	1.9%	1.3%	1.3%
	Asian & Pacific Islander	6.0%	6.8%	6.9%
	Other Races	4.7%	4.5%	3.6%
	Hispanic Population	2.3%	3.1%	3.7%
Income	Average Household Income	\$161,056	\$202,693	\$192,509
	Median Household Income	\$125,707	\$151,254	\$151,304
	Per Capita Income	\$67,995	\$73,507	\$69,280
Education (Age 25+)	Elementary	2.2%	1.3%	1.7%
	Some High School	2.0%	1.4%	2.1%
	High School Graduate	18.0%	17.3%	18.2%
	Some College	15.5%	13.2%	12.7%
	Associates Degree Only	7.1%	6.1%	7.0%
	Bachelors Degree Only	34.7%	33.9%	32.1%
	Graduate Degree	20.5%	26.7%	26.2%
Business	Number of Businesses	192	1,013	3,407
	Total Number of Employees	1,741	12,909	45,325
	Employees per Business	9.07	12.74	13.30
	Residential Population per Business	25.67	26.10	28.07

This report was produced using data from private and government sources deemed to be reliable and is herein provided without representation or warranty.